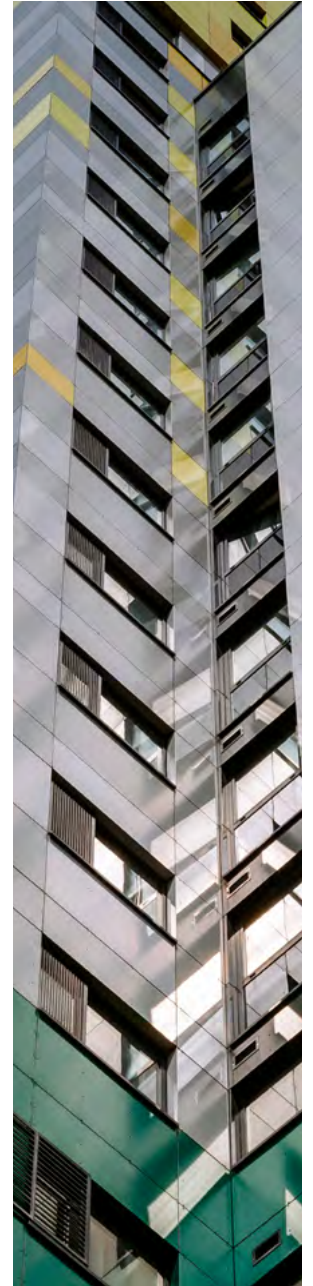




UNIVERSITY OF  
PORTSMOUTH

# STUDENT HOUSING IN PORTSMOUTH

Information and application brochure  
2023-24



**5**★  
UNIVERSITY  
QS TOP UNIVERSITIES 2023

**NO.2**  
BEST PLACES  
TO LIVE IN THE UK  
NOMAD NATION 2022

**94%**  
GRADUATES IN WORK  
AND/OR FURTHER STUDY  
HESA GRADUATE  
OUTCOMES SURVEY 2019/20

[port.ac.uk](https://port.ac.uk)



## STUDENT HOUSING TEAM

We're here to help you find accommodation. We offer an all-year-round support service that our new and returning students can easily access.

### Contact us

W [port.ac.uk/accommodation](http://port.ac.uk/accommodation)  
E [student.housing@port.ac.uk](mailto:student.housing@port.ac.uk)  
T +44(0)23 9284 3214

All our University halls of residence meet the criteria of the Universities UK (UUK) Code of Practice for university-managed student accommodation, which specifies standards of facilities and their management. We will therefore provide University accommodation that is maintained to a reasonable standard and complies with relevant health and safety laws and the UUK Code.



# CONTENTS

Living in Portsmouth	2
Your accommodation options	3
The only island city in the UK	4
Private rented accommodation	6
Making a considered choice	8
Halls of residence	10
Self-catering halls	12
Catered halls	14
Supporting your needs	16
How to apply	18
Our allocation policy	20
What happens next?	21



# LIVING IN PORTSMOUTH

PORTSMOUTH ISN'T JUST A GREAT PLACE TO STUDY. IT'S A GREAT PLACE TO LIVE.

## Top **5** reasons to live within the city

**1** Portsmouth is very **compact** so it's easy to find accommodation within a reasonable distance of where you'll study, shop and enjoy your spare time



**2** It's **flat** - perfect for cycling or walking



**3** It's easily **accessible** by road, rail, air and sea



**4** There is four miles of **beach** to explore and extensive **green spaces**



**5** The city is **diverse**, one minute you can be walking the cobbled historic streets and the next taking in the views of the Spinnaker Tower

# YOUR ACCOMMODATION OPTIONS

AS A NEW STUDENT, YOU'LL EITHER LIVE IN HALLS OF RESIDENCE OR THE LOCAL COMMUNITY IN PRIVATE RENTED ACCOMMODATION.

Where you choose to live will depend on the experience you're looking for and how independent you want to be. There are plenty of options for you to consider and we're here to help you find the most suitable place.

The University works with Unite Students and Yugo and allocates halls across the Guildhall campus on their behalf. We have options to suit everyone and these include:

- **Halls of residence:** Self-catered and catered halls of residence across the Guildhall and Rees Hall sites.
- **Privately rented shared houses, flats and private halls:** Privately owned and managed accommodation for students that varies in terms of price, size and location.
- **Lodgings:** Rooms rented in private houses where the landlord lives on the premises.

## RESIDENCE LIFE TEAM

Whether you choose to live in halls or private rented accommodation you will have access to our Residence Life Team. They offer help and advice with community living, run a varied social events programme throughout the year and provide welfare cover 24 hours a day, 7 days a week.



# THE ONLY ISLAND CITY IN THE UK

IT TAKES AROUND AN HOUR TO WALK ACROSS THE ISLAND FROM EAST TO WEST, SO EVERYTHING IS EASY TO REACH.

## LOCATIONS

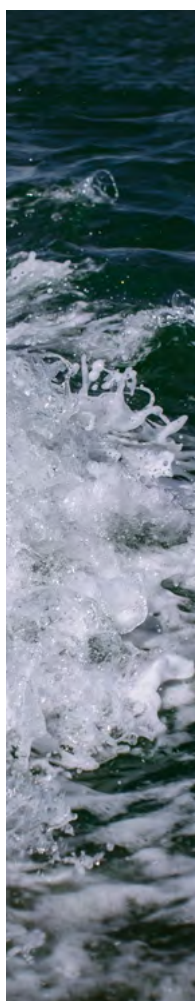
There are many student-friendly areas to live in Portsmouth, whether you are in halls of residence or in private rented accommodation. The University provides a free circular bus service around the main student areas in term time so getting about couldn't be easier!

Within **Portsmouth, Southsea and Fratton** are popular with students due to their proximity to the campus. Much of the student accommodation in these areas is within walking distance of the campus, with good cycle links too.

**Eastney, Milton, North End and Hilsea** are located to the east and north of Southsea and Fratton. They are in easy reach of the University thanks to the excellent public transport links in the city, as well as good cycle routes.

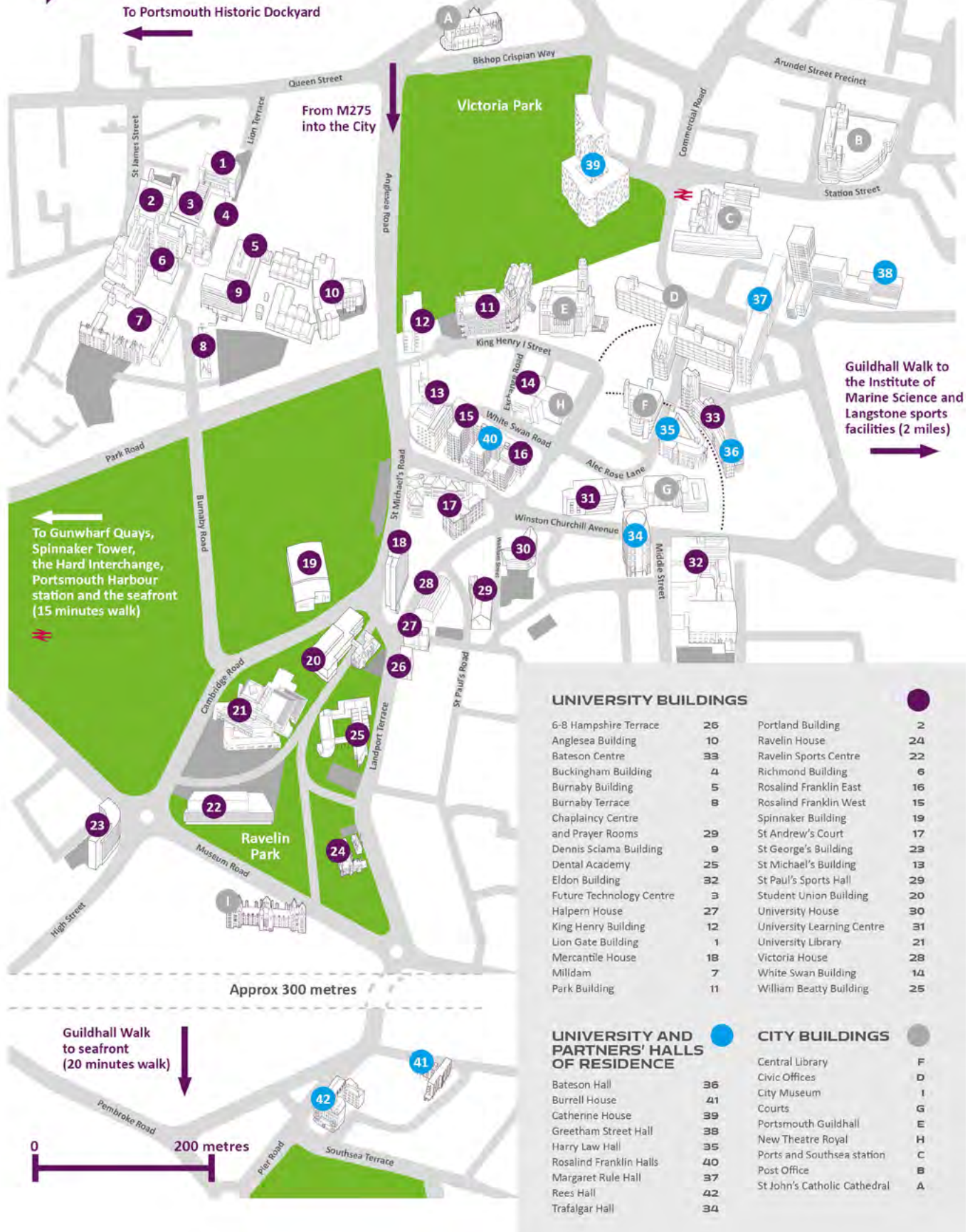
**Drayton, Farlington and Cosham** are located to the north of the city. These areas are well served by public transport links (it is a 12-minute train ride from Cosham to Portsmouth), with good value accommodation to be found.

**Fareham and Gosport** are located to the west of Portsmouth, with direct public transport links into Portsmouth. Gosport is linked to Gunwharf Quays by a five-minute ferry ride (and you can take your bike on board), while the central Fareham train station is around a 20-minute ride from Portsmouth and Southsea city centre station.





# UNIVERSITY OF PORTSMOUTH



# PRIVATE RENTED ACCOMMODATION

LIVING AS PART OF THE LOCAL COMMUNITY MEANS YOU'LL BE A STONE'S THROW AWAY FROM EVERYTHING YOU NEED – FROM SHOPPING AREAS, TRANSPORT LINKS, KEY UNIVERSITY BUILDINGS, NIGHTLIFE AND THE SEAFRONT.

In the private rented sector you are able to choose your location, type of accommodation, budget and your housemates. There is a wealth of accommodation around the city and the surrounding areas.

## SHARED HOUSES AND FLATS

This type of accommodation makes up the majority of student housing in Portsmouth. It is typical for students to rent houses in groups of three to five, although some smaller or larger properties are available.

Students living in a privately rented house would usually be sharing the communal areas such as the lounge, diner, kitchen and bathroom facilities. Each student will have their own fully-furnished bedroom which vary in size. Bedrooms are for sole use/single occupancy. Landlords will not let these rooms to more than one student, couples or students with families.

We publish information on shared houses, flats, lodgings and private halls registered for advertising with the University through [portsmouthstudentpad.co.uk](https://portsmouthstudentpad.co.uk).

The Student Housing team continuously monitors the standards of properties advertised on StudentPad. In all cases we must receive copies of all relevant documentation e.g. gas safety certificate, electrical safety certificate, HMO licence etc for the property and all registered properties should meet our criteria for safety, facilities, location and decorative order.

You can join our Facebook group, @UoPStudentHousing, where you can find like-minded housemates and be able to read adverts from people wanting to fill a vacancy in their shared house or lodging, for example.

You may be asked to provide a UK based guarantor before the tenancy starts. If you cannot provide a guarantor some landlords may request a very large portion of the rent (6 months+) upfront to guarantee rental payments.

However, there are companies which can provide a guarantor service for a fee, such as Housing Hand. Please note that the University does not endorse any specific guarantor scheme, but is providing this information to assist students to assess all their options. You can contact Student Housing for further advice on guarantors if needed.

All new first-year students looking to secure a room in private rented accommodation will be given access to our secure online resource, the house-hunting portal, which:

- offers house-hunting advice and support
- gives you access to our up-to-date private sector room/house vacancies
- suggests ways for you to meet like-minded people prior to coming to university

The average rental for a room in a four-bedroom house in Southsea/Fratton is:

- £90–£120 per week – exclusive of all bills
- £100–£140 per week – inclusive of all bills







## LODGINGS

These are rooms in private houses where the landlord or a close relative lives on the premises. They can be family households or houses owned by other students (or their parents). Rooms are offered either as room only (with use of a kitchen, bathroom and other communal areas) or half board (with breakfast and evening meals provided).

Typical facilities in lodgings include:

- single occupancy study bedrooms, each containing a bed, suitable work surface and chair
- adequate drawer and hanging space
- adequate heating with permanently fixed heating appliances
- smoke detectors on each floor of the property
- adequate facilities for the number of occupants

All the rooms offered as lodgings meet the registration criteria set by Student Housing for advertising on Portsmouth StudentPad. Unless otherwise specified, rooms offered as lodgings have been inspected by a Student Housing Officer prior to advertising.

Students in lodgings are personally responsible for paying their rent to the householder. Normally, payment should be made weekly or monthly in advance, with a week or month's rent as a deposit.

We find that lodgings are generally very cost-effective as all bills are usually included. Neither householder nor student are asked to enter into any agreement as to the period of stay.

For guidance the approximate weekly charge in Portsmouth for lodgings is £90-£130 on either a room only or half board basis.

# MAKING A CONSIDERED CHOICE

THERE IS A HUGE RANGE OF STUDENT ACCOMMODATION IN THE PRIVATE SECTOR TO CHOOSE FROM DEPENDING ON YOUR SPECIFIC REQUIREMENTS.

## **SINGLE-SEX ACCOMMODATION**

You can still live in single-sex accommodation whilst sharing a house by finding students with similar requirements. Alternatively, if you are interested in living in lodgings, some landlords may specify their preferences on our website.

## **QUIETER LOCATION**

Residential areas tend to be quieter and you and your housemates can create a peaceful environment in your home, wherever you choose to live.

## **POSTGRADUATE AND MATURE STUDENTS**

Students who wish to live with other postgraduate and mature students will be given access to a dedicated Facebook group to find like-minded potential flatmates, and share their house-hunting experiences.

## **DEPENDANTS**

The University does not have emergency accommodation for students with dependents, so we strongly advise that students secure suitable accommodation for themselves and family before moving to the area. Please contact the Student Housing team for further guidance and assistance to on how to secure suitable accommodation.

## **ACCESSIBLE ROOMS**

Due to the layout of terraced houses in Portsmouth, the majority of houses in the city do not offer accessible rooms.

If you would like more guidance or support to find suitable accommodation, or if you have specific health-related needs, please contact the Student Housing team. You should also contact the Additional Support and Disability Advice Centre (ASDAC) at [asdac@port.ac.uk](mailto:asdac@port.ac.uk) who can discuss options with you and also liaise with the Student Housing team.

## **STUDENTS WITH PETS**

The majority of private rental accommodation does not allow pets, however permission to bring a pet to the property is at the landlord's discretion and you would need to discuss this aspect with them before making a decision.

## **RESIDENCE LIFE TEAM**

Students living in the private sector are able to access the Residence Life Team based in Guildhall halls of residence. They offer help and advice, run a varied social events programme throughout the year and provide welfare cover 24 hours a day, seven days a week for every week of your stay.

## **CAR PARKING IN THE PRIVATE SECTOR**

We strongly recommend that students do not bring their own car to the city. However, if it is necessary, please check on the Portsmouth City Council website for details and restrictions on the car parks and the residential parking places around main student areas. We also recommend that students check with their landlord or letting agent whether the property has a designated parking place and the prices for a parking permit.





# HALLS OF RESIDENCE

OUR HALLS OF RESIDENCE ARE IN TWO MAIN LOCATIONS AND EACH HAS ITS OWN DISTINCTIVE CHARACTER, OFFERING A SAFE AND SECURE ENVIRONMENT IN WHICH TO STUDY, SOCIALISE AND RELAX.

## SELF-CATERED ACCOMMODATION

Self-catered accommodation at Portsmouth comes in flat or corridor-style rooms with either en suite or shared bathroom facilities, for the real 'home away from home' experience. This is a good option if you love cooking, and want to be in charge of what you eat and when. Experience of cooking, sharing kitchen responsibilities and respecting each other's space are valuable life skills and preparation for the second year when you will move into private houses. You will have the freedom and flexibility to make your own meals whenever you like in your fully-fitted kitchen. There are plenty of supermarkets and independent food stores close by as well as cafés, takeaways and restaurants, some offering student discounts.

Our Student Finance team advise that you budget £40 per week for your food in self-catered accommodation. Visit [port.ac.uk/money](http://port.ac.uk/money) for information regarding Student Finance and the services they can assist you with during your time as a student.

## CATERED ACCOMMODATION

Catered hall accommodation is located in Southsea. The catered option provides breakfast and a two-course dinner with a wide choice of dishes every day, prepared from Fairtrade, quality ingredients by professional chefs. Our restaurant offers good quality food and hassle free meals, so there'll be no need to cook after a busy day.

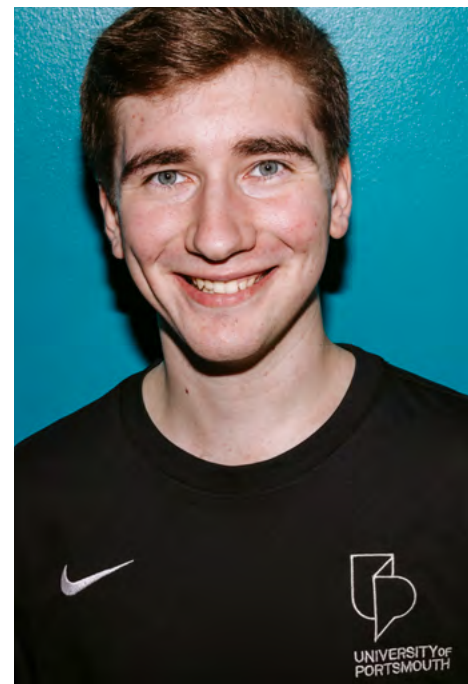
Benefits of catered halls:

- it is a social hub
- enables you to budget better
- breakfast and dinner are provided every day
- generous portions are served at each meal, with plenty of choice on the menu
- all menus include a daily vegetarian option and we can cater for most dietary requirements, including halal foods
- meals are served during a two to three-hour period to make sure it suits your timetable
- you will benefit from good food without having to wash up afterwards
- late dinners are available if notified in advance
- small kitchenettes are available for preparing snacks and to store drinks
- make the most of our themed food nights

If you have special dietary requirements but think a catered hall may suit you, then please email [reesburrellreception@port.ac.uk](mailto:reesburrellreception@port.ac.uk).

## RESIDENCE LIFE TEAM

The Halls of Residence have a dedicated Residence Life Team to assist students with community living. They offer help and advice, run a varied social events programme throughout the year and provide welfare cover 24 hours a day, 7 days a week for every week of your stay.





### SHARED OR EN SUITE BATHROOM

There are two types of bathroom facilities for you to choose between – shared and en suite.

Shared facilities: adequate shower rooms and toilet facilities are provided per flat or corridor.

En suite facilities: each room has a private shower, basin and toilet.

### STUDIO FLATS

Studio flats offer self-contained accommodation. These are prioritised for postgraduate students, depending on demand and availability. The studio flats have a single bedroom with en suite kitchenette (with a two-ring hob, microwave, small larder fridge and sink) and en suite toilet and shower facilities. Studio flats are available in Margaret Rule, Harry Law, Rosalind Franklin and Trafalgar Halls.

### WHAT IS IN A TYPICAL BEDROOM?

A typical hall bedroom is furnished with a single bed, study desk, chair, drawers, wardrobe, noticeboard, electrical sockets and with WiFi access. You can view room interiors at [port.ac.uk/accommodation](http://port.ac.uk/accommodation).

### WHAT ELSE IS INCLUDED IN THE ACCOMMODATION FEES?

- wireless Eduroam access
- wired broadband ResNet access
- dedicated Residence Life Team
- pay-as-you-go launderette facilities
- basic insurance cover
- utility services – gas, electricity, water

# SELF-CATERING HALLS

THESE HALLS ARE LOCATED AT THE HEART OF THE CITY AND ARE CONVENIENTLY SITUATED FOR THE MAIN SHOPPING CENTRES AND ENTERTAINMENT AREAS. THE GUILDHALL HALLS COMPRISES SEVEN HALLS, OFFERING SELF-CATERING FACILITIES WITH A MIX OF EN SUITE AND SHARED BATHROOM FACILITIES.

The flats come as a mixture of purpose-built developments or renovated buildings that are specifically developed with students in mind. Most flats accommodate between four to ten students, while others retain the traditional corridor-style accommodation. Each hall has its own unique character and is close to the majority of University buildings, Students' Union and sports facilities.



## **BATESON HALL\***

A very cost effective hall in a city centre location, it's just a stone's throw away from shops, supermarkets, restaurants, cafes, shopping outlet Gunwharf Quays, University buildings and facilities.

- Self-catered with shared kitchen and dining facilities in each self-contained flat
- 150 rooms arranged in self-contained flats of five students with shared bathrooms in each single-sex flat within mixed-sex blocks
- Standard room: £4,560 per academic year (£114 per week)
- Large room: £5,120 per academic year (£128 per week)

## **HARRY LAW HALL\***

Situated near the main city centre, you'll be able to walk to University buildings, numerous high street shops, supermarkets, restaurants and cafes, as well as Gunwharf Quays. With corridor-style rooms it's an excellent way to socialise and meet other students in shared kitchen and dining areas.

- Self-catered with shared kitchen and dining facilities for approximately six students
- 286 rooms arranged corridor-style, all with en suite bathrooms
- En suite room: £5,960 per academic year (£149 per week)
- Studio room: £6,720–£7,000 per academic year (£168–£175 per week)

## **GREETHAM STREET\*\***

From the sociable common area you'll be able to witness the spectacular views of the city – from the Spinnaker Tower to the Solent, and beyond. Built in the heart of the city, you will be within easy reach of all necessary amenities including transport links, the main shopping areas and a short walk to the University buildings.

- Self-catered with shared kitchen and dining facilities in each self-contained flat
- 761 rooms arranged in self-contained flats of up to 10 students, all with en suite bathrooms
- En suite room: £6,880–£7,120 per academic year (£172–£178 per week)

## **ROSALIND FRANKLIN HALLS\*\***

This hall has the University on its doorstep and is close to the city centre. Great shopping, restaurants and entertainment are a short walk away.

- Self-catered with shared kitchen and dining facilities in each self-contained flat
- 688 rooms arranged in self-contained flats for four to six students, all with en suite bathrooms
- En suite room: £6,160 per academic year (£154 per week)
- Studio room: £6,720 per academic year (£168 per week)



### **MARGARET RULE HALL\*\***

Living in this hall, you'll be in the centre of Portsmouth with everything you need a short walk away including the University, shops and entertainment, with great transport links also nearby.

- Self-catered with shared kitchen and dining facilities in each self-contained flat
- 342 rooms arranged in self-contained flats for four to eight students, all with en suite bathrooms
- En suite room: £6,400 per academic year (£160 per week)
- Studio room: £6,960 per academic year (£174 per week)

### **TRAFALGAR HALL\*\***

Close to our Eldon Building, where our creative and cultural industries subjects are taught, you will be near our University buildings, the gym and Library.

- Self-catered with shared kitchen and dining facilities in each self-contained flat
- 288 rooms arranged in self-contained flats for six students, all with en suite bathrooms
- En suite room: £5,720 per academic year (£143 per week)
- Studio room: £6,720 per academic year (£168 per week)

### **CATHERINE HOUSE†**

Socialise in the unique Sky Lounge, a common room space with games tables and stunning views of the city. Situated next to Victoria Park you'll be able to study or enjoy picnics in the park, or take a stroll to the city centre and University buildings.

- Self-catered with shared kitchen and dining facilities in each self-contained flat
- 709 rooms arranged in self-contained flats of four to six students, all with en suite bathrooms
- En suite room: £6,360–£6,720 per academic year (£159–£168 per week)

### **UNITE STUDENTS AND YUGO**

We work closely with Unite Students and Yugo to provide some accommodation for our students.

All the accommodation is high quality and self-catered, with en suite facilities. We will be processing applications for the buildings managed by Unite Students and Yugo, details on your allocation and further correspondence regarding your contract will be sent to you directly by them.

Please note: if you are allocated a place in one of these halls, your accommodation contractual obligations will be with Unite Students or Yugo.

# CATERED HALLS

STUDENTS ARE PROVIDED WITH DINING FACILITIES, LAUNDERETTE FACILITIES AND A COMMON ROOM. REES HALL AND BURRELL HOUSE ARE LOCATED IN SOUTHSEA, CLOSE TO THE SEAFRONT OVERLOOKING SOUTHSEA COMMON AND THE SOLENT. THEY OFFER EXCELLENT COMMUNITY LIVING FOR RESIDENTS, WITH THE UNIVERSITY BUILDINGS, STUDENTS' UNION, SPORTS FACILITIES AND CITY CENTRE ALL WITHIN EASY WALKING OR CYCLING DISTANCE.

## REES HALL\*

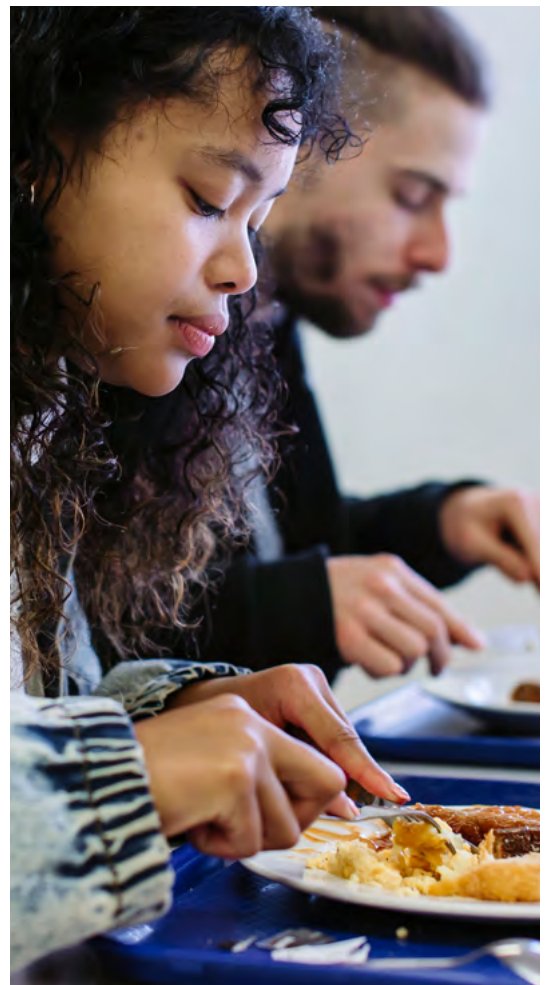
A catered hall with en suite bathrooms. There are excellent dining facilities, as well as common rooms with televisions making it a very sociable hall with plenty of opportunities to meet other students. There are also small kitchenettes for students to make and store food outside of catering times, affordable on-site laundry facilities and bicycle storage.

- Catered (two meals a day in the Rees Hall restaurant)
- 267 rooms arranged corridor-style, all with en suite bathrooms
- En suite room: £8,000 per academic year (£200 per week)

## BURRELL HOUSE\*

Burrell House is located just behind Rees Hall and is within close walking distance to University buildings and the seafont. It's a sociable hall offering excellent affordable communal living.

- Catered (two meals a day to be taken in Rees Hall restaurant)
- Rooms arranged corridor style with shared bathroom facilities
- Rooms from £6,200–£6,960 per academic year (from £155–£174 per week)





<b>GUILDHALL HALLS</b>	CATERED	SELF-CATERED	EN SUITE	WEEKLY PRICES	SESSION FEE (ACADEMIC YEAR) BASED ON A HALLS CONTRACT OF 38 WEEKS
* Bateson Hall (standard room)		✓		£114	£4,560
* Bateson Hall (large room)		✓		£128	£5,120
** Trafalgar Hall		✓	✓	£143	£5,720
** Trafalgar Hall studio room		✓	✓	£168	£6,720
* Harry Law Hall		✓	✓	£149	£5,960
* Harry Law Hall studio room		✓	✓	£168–£175	£6,720–£7,000
** Rosalind Franklin Halls		✓	✓	£154	£6,160
** Rosalind Franklin Halls studio room		✓	✓	£168	£6,720
** Margaret Rule Hall		✓	✓	£160	£6,400
** Margaret Rule Hall studio room		✓	✓	£174	£6,960
** Greetham Street Hall		✓	✓	£172–£178	£6,880–£7,120
† Catherine House		✓	✓	£159–£168	£6,360–£6,720
<b>REES AND BURRELL</b>					
* Rees Hall	✓		✓	£200	£8,000
* Burrell House	✓			£155–£174	£6,200–£6,960

**Please note:** all prices are estimated and subject to confirmation. Prices are rounded to the nearest pound for clarity. Session fees based on a 40 week contract.

\*These halls of residence are University of Portsmouth-owned buildings, therefore your contractual agreement will be with the University of Portsmouth. Please refer to the application portal for the terms, conditions and cancellation policy for these buildings.

\*\*These halls of residence are Unite Students-owned buildings, therefore your contractual agreement will be with Unite Students. Please refer to the application portal for the terms, conditions and cancellation policy for these buildings.

†This hall of residence is owned by Yugo, therefore your contractual agreement will be with Yugo. Please refer to the application portal for the terms, conditions and cancellation policy for this building.

# SUPPORTING YOUR NEEDS



## CAR PARKING

The University has agreed with Portsmouth City Council to participate fully in policies aimed at alleviating traffic and parking congestion and improving air quality in the city. Therefore please note:

- Guildhall Halls – students accepting a place at any of the Guildhall Halls must agree not to bring a car to Portsmouth.
- Rees Hall and Burrell Hall – there are no general car parking facilities. These facilities are only available to blue badge holders.

Blue badge holders should contact the Transport Coordinator on [car.parking@port.ac.uk](mailto:car.parking@port.ac.uk) for more information about parking facilities available.

## SINGLE-SEX ACCOMMODATION

All the halls provide mixed-sex accommodation with the exception of Bateson Hall, which are single-sex flats due to shared bathroom facilities. Bateson Hall also has an accommodation block that is solely allocated to female students. Individual flats in other halls can be allocated as single-sex depending upon demand. Please specify on your application form if this type of accommodation is required and we will do our best to meet your request.

## QUIETER LOCATION

Living in halls of residence can provide a lively environment to live and study in. Students who wish to experience living in a vibrant hall community, but who would prefer a calmer study/work environment can request a quieter location. Individual flats or areas across the halls can be designated as quiet flats depending upon demand. Please specify on your application form if you have a preference for a quieter location and we will endeavour to do our best to meet your request and allocate you with like-minded people.

## POSTGRADUATE STUDENTS

Studios are prioritised for postgraduate students, depending upon demand and availability. Please specify on your application form if this type of accommodation is required and we will do our best to meet your request.

## DEPENDANTS

Rooms in halls of residence are equipped for single occupancy. Students with dependants are advised to contact Student Housing for information on the latest availability of accommodation in the private rented sector, which may be suitable for families. We strongly advise any student with dependants to come to Portsmouth to secure accommodation before moving them to the area.



## ACCESSIBLE ROOMS

The University aims to take into account the needs of all students with disabilities and long-term health conditions. We ask that if you require adapted or accessible accommodation you let us know as soon as possible so we can discuss your needs and advise on the availability of suitable facilities. If you have an impairment, e.g. mobility, sensory, neurodiverse, that could impact on your ability to evacuate a building, please tell us so we can check on the availability of appropriate accommodation. In the first instance, contact us at [student.housing@port.ac.uk](mailto:student.housing@port.ac.uk) and we will be able to discuss what options are available. You can also seek support and advice from the Additional Support and Disability Advice Service (ASDAC) at [asdac@port.ac.uk](mailto:asdac@port.ac.uk).

## LIVING AS PART OF A HALL COMMUNITY

When allocating the rooms and flats in University accommodation, we aim to create mixed and integrated communities. The benefits of this include the opportunity to live with students of different ages, cultures and backgrounds. However, it is important to realise that at times, living with many different people can naturally be vibrant and lively. We ask all our students to live harmoniously, with consideration and respect towards their fellow hall residents, and the local community.

# HOW TO APPLY

PLEASE FOLLOW THE INSTRUCTIONS DETAILED IN THE COVERING LETTER OR EMAIL SENT WITH THIS BROCHURE ON HOW TO ACCESS THE ONLINE APPLICATION.

1. Read the information in this brochure carefully and decide on the type of accommodation you wish to apply for.
2. When completing the application, please check that the information provided on the form is current and correct, especially your email address, and make any necessary amendments.
3. If you apply for halls of residence, you need to select which type of room and the location you would like to live in. When you make your application, please note there will be a minimum number of accommodation preferences you will need to select and you will be guided through this as you make your application. Within each hall preference you need to select a minimum of one room type preference.
4. We would like to make you aware that some types of room, particularly in the Guildhall area, are very popular and can be oversubscribed. It is advisable to be flexible and to make as many choices as possible.
5. Once you have completed the application form, please check it carefully and make sure you are happy with your choices before submitting it through the online portal.
6. Please take note of the application deadlines in the allocation policy on page 20.



## **HALLS OF RESIDENCE OR PRIVATE RENTED ACCOMMODATION**

There are two sections on the form under accommodation requirements: private rented accommodation and halls of residence. You should select either private rented accommodation or indicate your preferences for halls of residence. There is no need to complete both sections. If you apply for a halls of residence room after the guaranteed deadline and we cannot offer you one of your choices, we will automatically send you information about finding private rented accommodation.

## **CONTRACTUAL OBLIGATIONS IN UNIVERSITY OF PORTSMOUTH HALLS**

It is vital that you familiarise yourself with the information provided for each type of halls of residence, including the costs, facilities and occupancy periods as detailed in this brochure. Under normal circumstances, we will only make one offer of accommodation and if you accept that offer, you will be responsible for paying the fees for the entire occupancy period, unless you leave because you have withdrawn from the University. We will do our best to facilitate transfers between halls before and during the academic year if requested but please note this is not always possible and depends upon availability of alternative rooms.

## **CONTRACTUAL OBLIGATIONS IN UNITE STUDENTS' AND YUGO'S BUILDINGS**

Although the University of Portsmouth is processing applications for Unite Students' and Yugo's buildings, all contractual and cancellation obligations for students allocated to these halls will be with Unite Students or Yugo. If successfully allocated to Greatham Street, Margaret Rule Hall, Rosalind Franklin or Trafalgar Hall, Unite Students will send information on the room offer, advance rent and contractual obligations (including their cancellation policy), how to secure the booking and other relevant details. If successfully allocated to Catherine House Hall, Yugo will be responsible for its administration.

## **OCCUPANCY**

All rooms are for sole use/single occupancy and are allocated for the full academic year. The session fee relates to this period of time and are based on a 40 week contract. If your course duration is different in length, for example, if it is only for one term, or it starts and finishes outside the standard dates, we may still be able to offer you a hall place, but may have to restrict the choices available to you for operational reasons. Students requiring accommodation outside these dates should contact Student Housing for details of summer accommodation options.

You can use your room during the Christmas and Easter holidays – there is no need to clear your room or move out.

## **SPECIFIC REQUIREMENTS**

If you have any specific requirements, please indicate this on your application and, if necessary, send in any supporting documents.

### **Please note:**

- Due to data protection legislation, we are not able to discuss your accommodation application or allocation information with anyone other than you. We can only give general information to third parties for example, parents and guardians.
- If you would like someone to complete your application or act on your behalf with regards to your application, please provide Student Housing with written permission authorising this at the time of returning your completed accommodation application.

**In all instances, we aim to offer you your highest available preference at the time of receipt of your application.**

# OUR ALLOCATION POLICY

## ENTRY FOR UK, EU AND INTERNATIONAL (NON-EU) STUDENTS STARTING SEPTEMBER 2023

At the University of Portsmouth we are able to guarantee an offer of a room in halls to all new full-time undergraduate and postgraduate UK, EU and International students for their first year of study, if they make us their firm choice university and apply for their accommodation by 20 June 2023. New full-time UK, EU and International students applying for September 2023 entry will become eligible to apply for halls of residence once they have firmly accepted an offer to study at the University.

Accommodation applications will be sent out on a weekly basis from February to September as applicants firmly accept a place to study at the University of Portsmouth. Places in halls of residence will be allocated based on order of receipt of accommodation applications in Student Housing. Students holding an unconditional firm offer will be prioritised for their preferred hall choices available at the time of receipt of their accommodation application in Student Housing.

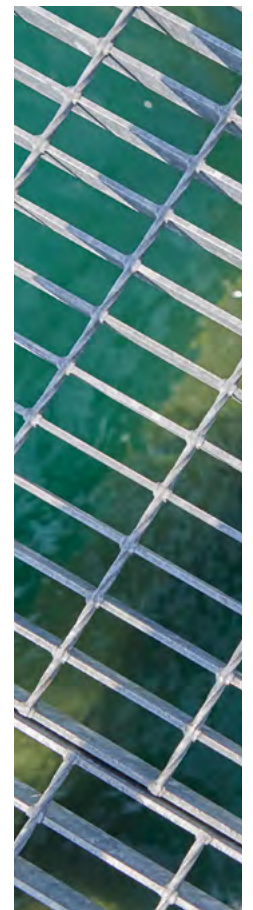
Applicants are therefore encouraged to submit an accommodation application at the earliest opportunity. Where possible, applicants will be allocated their highest available

preference of accommodation, subject to availability. Please note – because the halls vary in the number of students they accommodate and some are more popular than others, obtaining your higher preferences cannot always be guaranteed. Applicants who apply after the deadline will be offered a room in halls of residence subject to availability. If we are unable to offer a room in halls of residence, applicants will be given help and advice on finding private rented accommodation through online resources and housing support.

## EXCEPTIONS TO ALLOCATION POLICY

Any students attending courses run by the University at other sites outside Portsmouth are advised to contact the Accommodation Office at those relevant locations for assistance in securing more conveniently located accommodation. Please contact Student Housing if you would like further information on this matter and your accommodation options.

Students starting courses in January or February 2024 will be able to apply for accommodation during the autumn term through the online portal. Applicants will be allocated their highest available preference of accommodation at the time of receipt of their accommodation application subject to availability.



# WHAT HAPPENS NEXT?



We will notify you of the outcome of your accommodation application from April 2023 onwards. If we offer you a room in a hall of residence, you will need to pay a £250 deposit or advance rent payment to secure your place at that time. This will be paid to the University or a third party provider depending on where you are allocated.

The deposit or advance rent payment must be paid by the date specified on the offer, which is usually within 14 days of the offer being made. If it is not paid by the specified date, we reserve the right to cancel the offer, and in some circumstances this may be without further notice.

Any student who, for any reason, does not intend to start their course of study at Portsmouth, must inform Student Housing in writing before 25 August 2023 in order for the deposit to be refunded in full. After this date, any refund (partial or full) that is due following cancellation before the start of occupancy is dependent upon if and when the room is re-let. Any other cancellations after 25 August 2023 must also be in writing and before the start of the occupancy.

If we are unable to offer you a place in halls of residence or if you indicate a preference for private rented accommodation, our Student Housing team is here to help you find the right student home. There is housing information and support available throughout the year to all of our students, to make sure you settle in to life in Portsmouth.

## ACCOMMODATION PAYMENTS

It is a precondition of the contractual agreement to pay a £250 deposit or advance rent to secure the booking, prior to moving into halls of residence. The amount will be held by the University for the duration of the accommodation agreement or by either Unite Students or Yugo for their tenancy agreement. The deposit is refundable at the end of the accommodation agreement period, less any sums owed to the University or third party provider against which the deposit may be offset.

Please note a £250 deposit is an additional amount to the accommodation fees and cannot be paid by direct debit. You will be sent details on how to pay your deposit when you are sent an offer of a room.

Please do not make your deposit or advance rent payment until you have received an offer of a room in a halls of residence.

For payment queries, please email [income@port.ac.uk](mailto:income@port.ac.uk) quoting your Student ID number.

## DISCLAIMER

Please note that nothing in this brochure constitutes a contract between the University of Portsmouth and any potential student. The University reserves the right to change anything stated in this brochure without informing all recipients. Any such changes will be those considered by the University in its reasonable opinion to be necessary for the smooth and safe running of halls of residence and the University.

Please keep checking [port.ac.uk/accommodation](https://port.ac.uk/accommodation) or your 'StudentHome' portal for any communication regarding updates.

## Contact us

W [port.ac.uk/accommodation](http://port.ac.uk/accommodation)  
E [student.housing@port.ac.uk](mailto:student.housing@port.ac.uk)  
T +44(0)23 9284 3214