

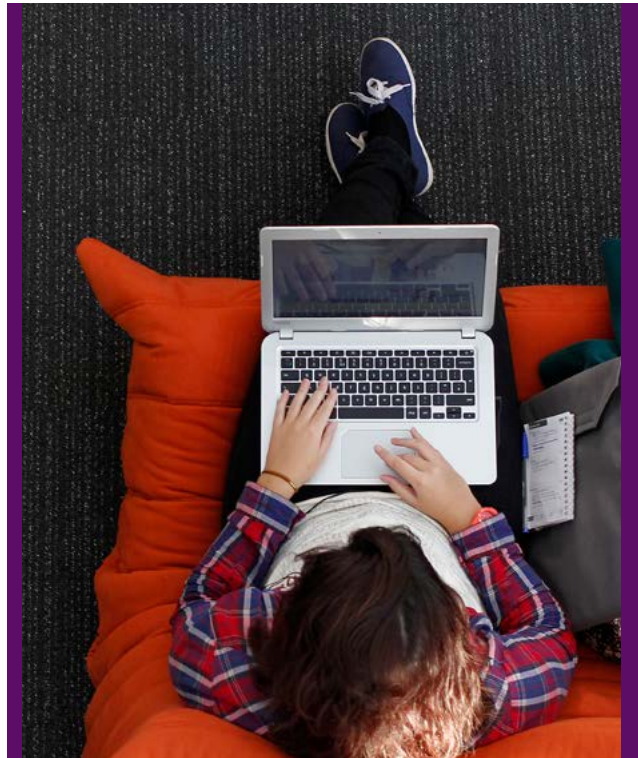


UNIVERSITY OF
PORTSMOUTH

YOUR VIRTUAL OPEN DAY

Get comfortable. We're bringing Portsmouth to you. So, grab a cuppa and snacks, find somewhere comfy to sit and join us for a taste of uni life.

Wednesday 30 June, 10.00am-3.00pm



WE'RE LOOKING FORWARD TO SHOWING YOU ALL THAT PORTSMOUTH HAS TO OFFER.

Get ready to:

- Speak to academic teams and discover more about your course
- Get the inside scoop on life outside of study from our students
- Virtually tour the campus and halls
- Ask questions on applying, finance, housing and wellbeing
- Get support with your personal statement

Subject Talks

These are called webcasts. Here you can watch a presentation on your subject area of interest then join a live Question and Answer session to ask anything about these topics.

Life Outside Study

Our current students and graduates will be answering your queries about living and studying in Portsmouth. You can also join a Live Student Panel session at 10.00am.

Virtual Halls Tours

Running on-demand throughout the day, you can take a tour of the city or our halls of residence and see where you could be living.

Information Fair

At Portsmouth, you always have the support of our student services to help you with your finances, accommodation, career planning, and your health and wellbeing. Visit their booths to watch presentations and ask your questions.

Agenda

On the top right of the open day home page, click the clock icon to create your own personal agenda. Add as many sessions as you want and you will receive a reminder email 15 minutes before those sessions begin.

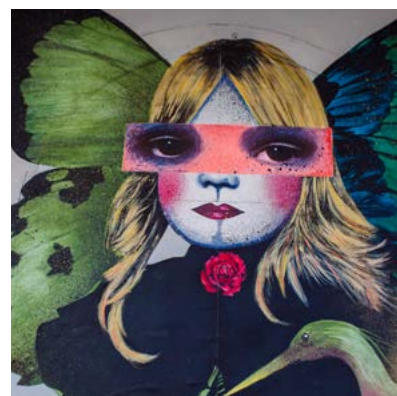
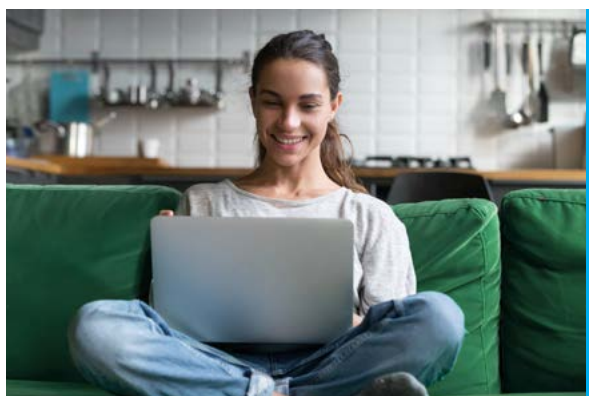
Event Bag

Whenever you see a star in a booth, it means you can save that item to your event bag and revisit it later. You can view and manage your items in your event bag by clicking the star icon on the top right of the Open Day homepage.

WHAT'S ON

THERE IS SO MUCH ABOUT PORTSMOUTH YOU'LL LOVE. TAKE A LOOK AT EVERYTHING YOU CAN DO AND PLAN YOUR DAY. SOME ACTIVITIES ARE RUNNING ON-DEMAND WHILST OTHERS ARE SCHEDULED THROUGHOUT THE DAY.

| ACTIVITY | WHEN IS THIS ACTIVITY AVAILABLE | WHERE DO I FIND THIS ACTIVITY |
|-------------------------------------|--|---|
| Vice-Chancellor Welcome Talk | On-demand | From the Open Day homepage. |
| Subject Talks (webcasts) | On-demand | From the Open Day homepage. Find the booth of the subject you're interested in and select the 'Webcast' icon to watch the talk. |
| Subject Live Q&A | Scheduled throughout the day. See live Q&A schedule below. | From the relevant Subject booth. Found by clicking on 'Subject talk booths' from the Open Day homepage. |
| Information Fair | On-demand | From the Open Day homepage. |
| Personal Statement Support | On-demand | Drop in to the live chat to request a review of your personal statement. |
| Virtual Halls Tours | On-demand | From the Open Day homepage. |
| Explore the City | On-demand | From the Open Day homepage. |
| Life Outside Study | On-demand | From the Open Day homepage. |
| Student Panel Discussion | Live: 10.00am | Click on the hotspot in Life Outside Study. |



SUBJECT-SPECIFIC LIVE Q&A SESSIONS

WEDNESDAY 30 JUNE SCHEDULE

| Start time | Faculty of Business and Law | Faculty of Creative and Cultural Industries | Faculty of Humanities and Social Sciences | Faculty of Science and Health | Faculty of Technology |
|------------|--|---|---|--------------------------------------|---|
| 11.00am | Accounting and Finance | Creative Technologies includes Animation, Computer Games and VR, Creative Computing, Music and Sound Technology, and Creative and Digital Media | International Development | Biological Sciences | Building Surveying, Property Development and Quantity Surveying |
| | International Business | | English Literature | Operating Department Practice | |
| 11.30am | | Performing Arts | Criminology | Paramedic Science | Product Design |
| | | | Primary Education | Sport Science | |
| 12.00pm | Business and Management | Film, Media, Communication, Journalism and Creative Writing | History | Geography and Environmental Sciences | Civil Engineering and Construction Engineering Management |
| | Marketing | | | Geological Sciences | |
| 12.30pm | Business and Supply Chain Management | Art and Design includes Fashion and Textile Design, Graphic Design, Illustration and Photography | English Language and Linguistics | Nursing | Electronic Engineering |
| | | | | Radiography | Mathematics |
| 1.00pm | Economics | Film and Television and Broadcasting Production | Childhood Studies | Psychology | Mechanical and Manufacturing Engineering |
| | | | International Relations and Politics | Pharmacy and Biomedical Sciences | |
| 1.30pm | Law | | Languages | Social Work | Electrical and Renewable Energy Engineering |
| | Business Management and Entrepreneurship | | Sociology | Dental Hygiene, Therapy and Nursing | Physics |
| 2.00pm | Business and Human Resource Management | Architecture and Interior Architecture and Design | | | Computing |
| | | | | | Innovation Engineering |

CONTACT DETAILS

Check out our **top tips** for preparing for the Virtual Open Day. If you have any other questions before the day, please get in touch: opendays@port.ac.uk.



Privacy notice

We will be recording the group activities during the event, so visitors can access all the resources afterwards. Rest assured, the recording won't include any personal details that can be used to identify visitors.

